

**ITEM 47. TRAFFIC TREATMENT – VARIOUS TRAFFIC TREATMENTS AND  
PARKING ALLOCATION – ZETLAND AVENUE ZETLAND**

**TRIM RECORD NO: 2017/350056**

**RECOMMENDATION**

It is recommended that the Committee endorse the following traffic treatments and parking arrangements in Zetland Avenue, Zetland:

- (A) Installation of a 4.2 metre wide raised median island between Portman Street and the eastern end of Zetland Avenue;
- (B) Installation of a separated cycleway on both the southern and northern sides of Zetland Avenue between Portman Street and the eastern end of Zetland Avenue;
- (C) Installation of a mid-block pedestrian refuge island located in Zetland Avenue between Joynton Avenue and the eastern end of Zetland Avenue;
- (D) Allocation of parking on the northern side of Zetland Avenue between the points 20 metres and 32.6 metres (two car spaces), west of Joynton Avenue as “No Parking” for two future car share spaces;
- (E) Allocation of parking on the northern side of Zetland Avenue, between the points 38.5 metres and 69 metres (four car spaces), west of Joynton Avenue as “2P Ticket 8am-10pm”;
- (F) Allocation of parking on the southern side of Zetland Avenue, between the points 20 metres and 69 metres (six car spaces), west of Joynton Avenue as “2P Ticket 8am-10pm”;
- (G) Allocation of parking on the northern side of Zetland Avenue, between the points 22 metres and 53.5 metres (four car spaces), east of Joynton Avenue as “2P Ticket 8am-10pm”;
- (H) Allocation of parking the northern side of Zetland Avenue, between the points 53.5 metres and 74 metres, east of Joynton Avenue as a yellow “No Stopping” line;
- (I) Allocation of parking the southern side of Zetland Avenue, between the points 98 metres and 128 metres, east of Joynton Avenue as a yellow “No Stopping” line;
- (J) Allocation of parking on the northern side of Zetland Avenue, between the points 110 metres to 140 metres (four car spaces), and east of Joynton Avenue as “2P Ticket 8am-10pm”;
- (K) Allocation of parking on the northern side of the raised median island in Zetland Avenue, between the points 37.5 metres and 83.5 metres (eight car spaces) and between the points 91 metres and 156 metres (11 car spaces), east of Joynton Avenue as “2P Ticket 8am-10pm”;
- (L) Allocation of parking on the southern side of the raised median island in Zetland Avenue, between the points 66 metres and 83.5 metres (three car spaces) and between the points 91 metres and 156 metres (11 car spaces), east of Joynton Avenue as “2P Ticket 8am-10pm”;

- (M) Allocation of parking on the southern side of Zetland Avenue, between the points 22 metres to 56 metres (four car spaces), east of Joynton Avenue as “Disabled Parking Only”;
- (N) Allocation of parking on the southern side of Zetland Avenue, between the points 61 metres to 87 metres (four car spaces), east of Joynton Avenue as “No Parking”;
- (O) Allocation of parking on the southern side of Zetland Avenue, between the points 128 metres to 140 metres (two car spaces), east of Joynton Avenue as “Loading Zone”;
- (P) A yellow “No Stopping” line on the northern and southern sides along all kerb spaces that is not indented; and
- (Q) A “No Right Turn” control across the intersection of Zetland Avenue with Joynton Avenue.

**VOTING MEMBERS FOR THIS ITEM**

<b><i>Voting Members</i></b>	<b><i>Support</i></b>	<b><i>Object</i></b>
City of Sydney		
Roads and Maritime Services		
NSW Police – Redfern LAC		
Representative for the Member for Heffron		

**DECISION**

**BACKGROUND**

The Development Consent for the Green Square Town Centre (GSTC) (D/2012/1175/F) requires the Applicant to deliver a new road known as “Zetland Avenue”, between Portman Street and Victoria Park Parade. At the completion of the works, the new road will be dedicated to the City.

The delivery of the new road will address Condition 16, 17, 23 and 25 for the Green Square Town Centre which requires the applicant to submit a signage plan for kerbside parking and line marking arrangements that is to be referred to the Local Pedestrian, Cycling and Traffic Calming Committee, as part of the dedication of “Zetland Avenue” as a public road.

**COMMENTS**

The Green Square Town Centre will include a new two-way east-west aligned road, to be known as “Zetland Avenue” which will connect Portman Street and Victoria Park Parade. The City has approved the construction and dedication of Zetland Avenue, between Portman Street and Victoria Park Parade.

**Raised Median**

The new road is a two-way street, 23.5 metres wide and all parking spaces are provided in indented bays. Zetland Avenue will also include a raised median island (4.2 metres wide) from Portman Street to Victoria Park Parade. The median island will preserve the

road carriageway space for a future Light Rail Line in Zetland Avenue. A 2.3 metre wide indented parking bay is proposed on both sides of the raised median island.

### **Mid-block Pedestrian Refuge Island**

The Public Domain Strategy for Green Square Centre promotes permeable pedestrian access throughout the Town Centre. In line with this direction, it is proposed to introduce a mid-block pedestrian refuge island on Zetland Avenue, east of Joynton Avenue. The proposal will help improve general safety in the area as part of the City's commitment to calm traffic and improve residential amenity.

The provision for a formal marked intersection is not considered appropriate due to the close proximity to signalised intersections.

### **Separated Cycleway**

A separated cycleway is proposed on both the southern and northern sides of Zetland Avenue. The cycleway will provide future east-west connections from the Epsom Precinct to Green Square Town Centre. It is anticipated for the cycleway to continue east to connect with the future George Julius Avenue.

### **Ticket Parking**

The proposed "Zetland Avenue" is adjacent to the proposed Green Square Aquatic Centre and Gunyama Park. Once complete, the City anticipates high level of visitors to the Green Square Aquatic Centre and Gunyama Park.

Parking within the indented bays will be signposted as "2P Ticket 8am-10pm" which are in line with the City's Neighbourhood Parking Policy. These restrictions will provide parking turnover and availability of short term parking for visitors to the area.

### **No Parking Zones**

An indented bay signposted as "No Parking" is proposed on the southern side of Zetland Avenue, Zetland, east of Joynton Avenue to allow vehicles to pick up and drop off visitors to the Green Square Aquatic Centre.

### **Bus Zones**

Zetland Avenue, Zetland is anticipated to become a bus route in the future. The City has requested and gained approval from the Roads and Maritime Services for an in-lane bus zone on the northern and southern sides of Zetland Avenue, east of Joynton Avenue. The kerb spaces for the proposed bus zone locations on both sides of Zetland Avenue are allocated as "No Stopping" until a bus route is allocated to service Zetland Avenue.

### **Disability Parking**

Four disability parking spaces are proposed on the southern side of Zetland Avenue, Zetland, east of Joynton Avenue outside the proposed Green Square Aquatic Centre. Each disability parking space is 7.8 metres long and 4.15 metres wide. A kerb ramp will be installed in the indented disability parking bay to facilitate access for wheelchair-bound people.

### **Loading Zones**

A 12 metre loading zone is proposed on the southern side of Zetland Avenue, Zetland, east of Joynton Avenue to improve on-street loading access in the area.

## **CONSULTATION**

The City consulted local residents and businesses in the area through a community engagement event for Green Square proposals and publication of the proposal on the "SydneyYourSay" website. Over 100 people attended the event and 340 people visited the webpage.

There were no responses supporting or opposing the proposal.

**FINANCIAL**

Funds are available as part of the Green Square Project budget.

**ATTACHMENTS**

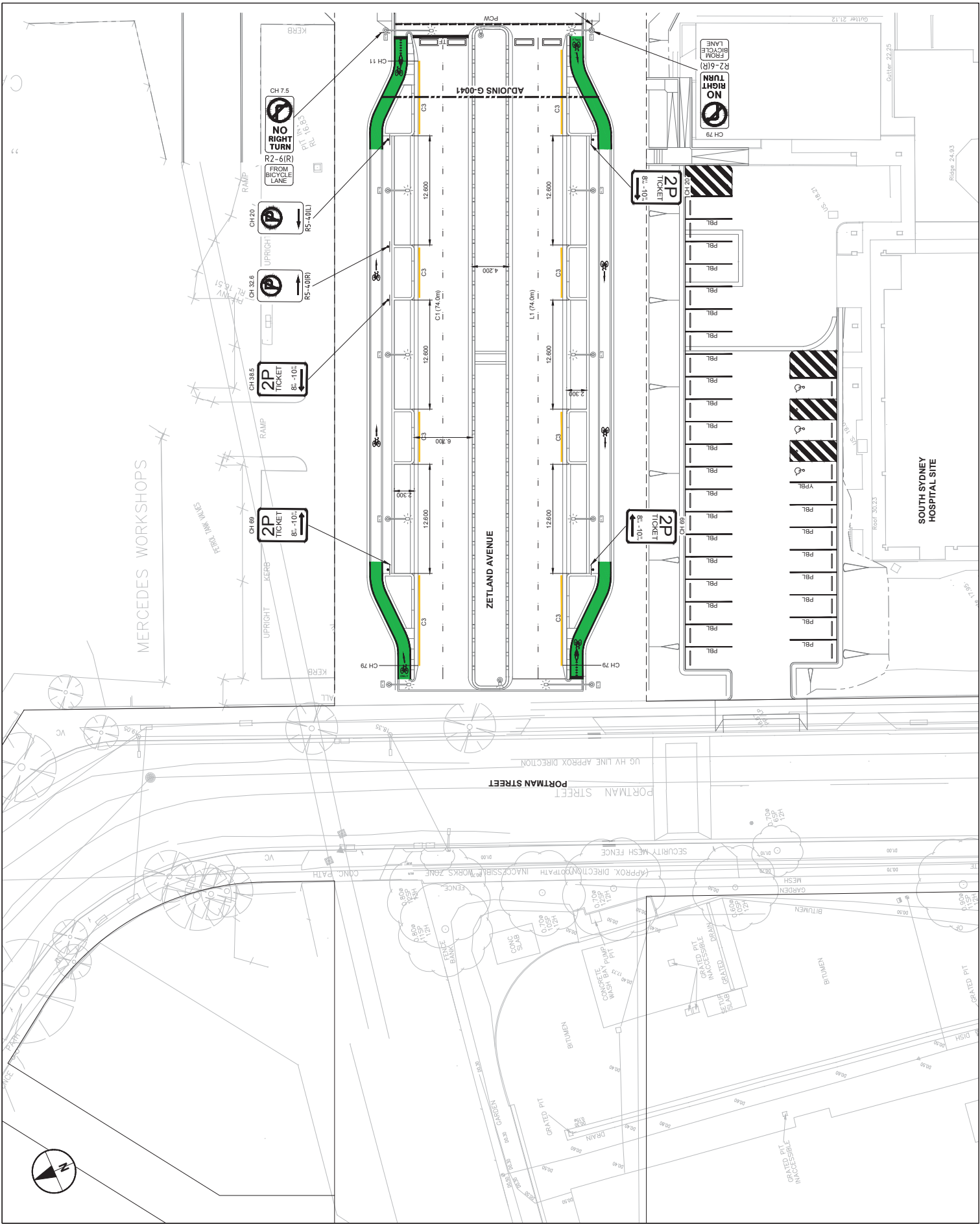
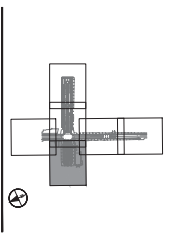
Traffic Treatment - Various Traffic Treatments and Parking Allocation - Zetland Avenue  
Zetland

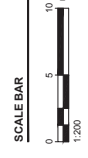
Alex Georgouras, Design Manager Green Square



ISSUE/REVISION

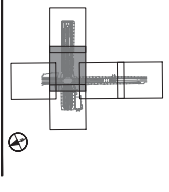
IR	DATE	DESCRIPTION
01	08/08/2017	FOR INFORMATION





ISSUE/REVISION

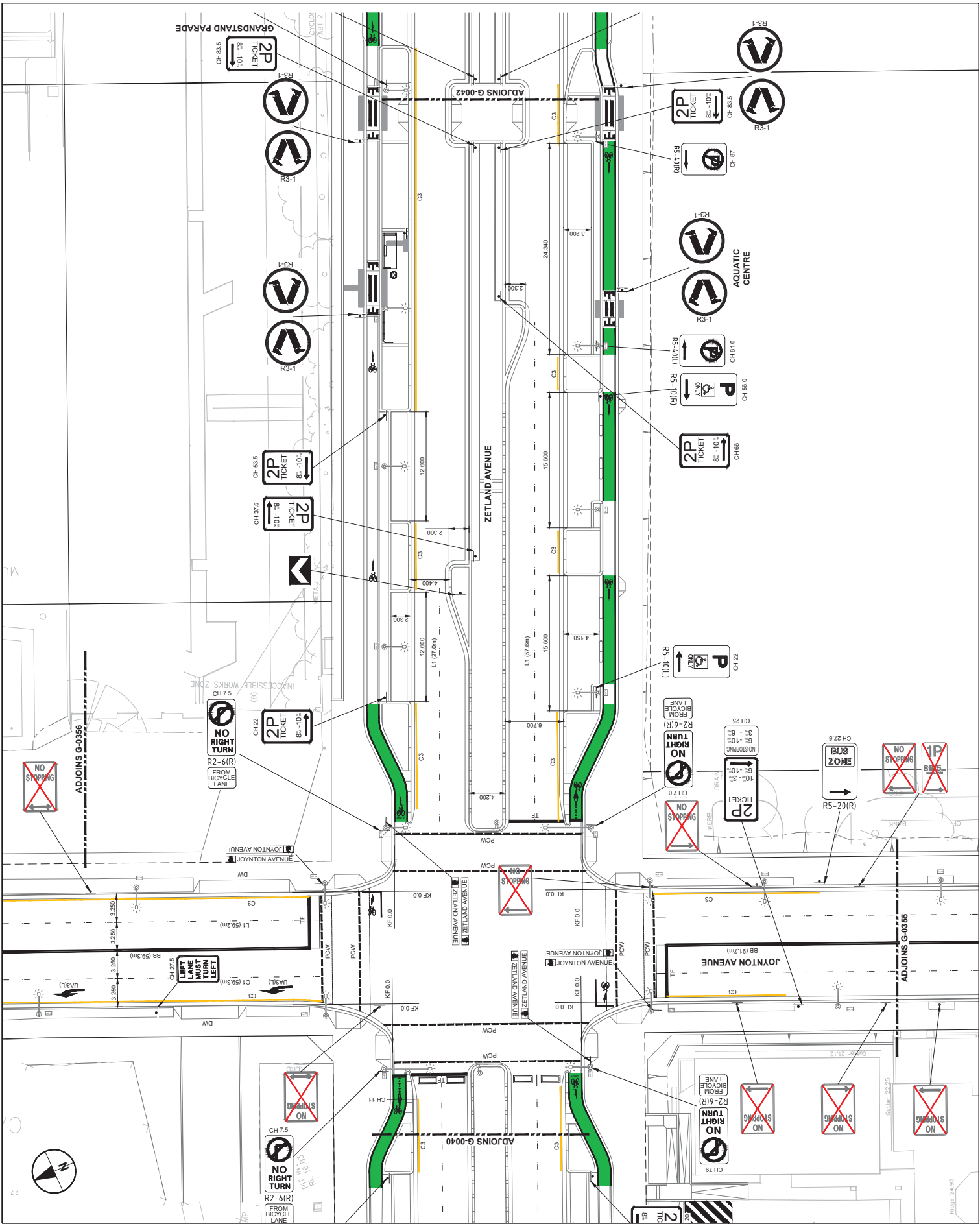
IR	DATE	DESCRIPTION
01	08/08/2017	EIP INFORMATION



PROJECT NUMBER  
60300384

SHEET TITLE  
PACKAGE 4A  
LINES AND SIGNS  
TRAFFIC COMMITTEE PLAN  
SHEET 2

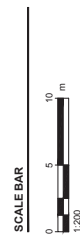
SHEET NUMBER  
REV  
60300384-SKE-02-04-G-0041 01



CLIENT

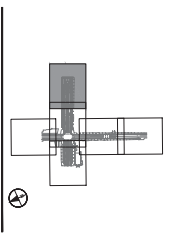


CONSULTANT  
 AECOM Australia Pty Ltd  
 Level 19, 100 Market Street, Sydney, NSW 2000  
 PO Box 0410, GVEB Post, Sydney, NSW 1230  
 +61 2 8934 0000 tel +61 2 8934 0001 fax  
 www.aecom.com



ISSUE/REVISION

IR	DATE	DESCRIPTION
01	08/08/2017	FCB INFORMATION



PROJECT NUMBER  
60300384

SHEET TITLE  
PACKAGE 4A  
LINES AND SIGNS  
TRAFFIC COMMITTEE PLAN  
SHEET 3

SHEET NUMBER  
REV  
60300384-SKE-02-04-G-0042 01

